



Test Report

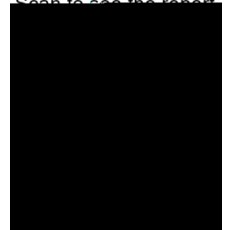
No.:

Date:

Test Requirement

Super Thoro

Scan to see the report





Test Report

No.:

Date:

Test Result(s):

--	--	--	--

EU RoHS Directive (EU) 2015/863 amending Annex II to Directive 2011/65/EU - Lead, Mercury, Cadmium, Hexavalent chromium, Polybrominated biphenyls (PBB), Polybrominated diphenyl ethers (PBDE), Bis(2-ethylhexyl) phthalate (DEHP), Butyl benzyl phthalate (BBP), Dibutyl phthalate (DBP) and Diisobutyl phthalate (DIBP)

Test Method:

--	--



Test Report

No.:

Date:

Notes:

Element(s)

Test Method:

Halogen

Test Method:



Test Report

No.:

Date:

--	--	--	--	--



Test Report

No.:

Date:

PFOSA, its salts

PFOA, its salts & derivatives



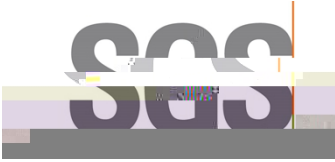
Test Report

No.:

Date:

ATTACHMENTS

Elements Testing Flow Chart





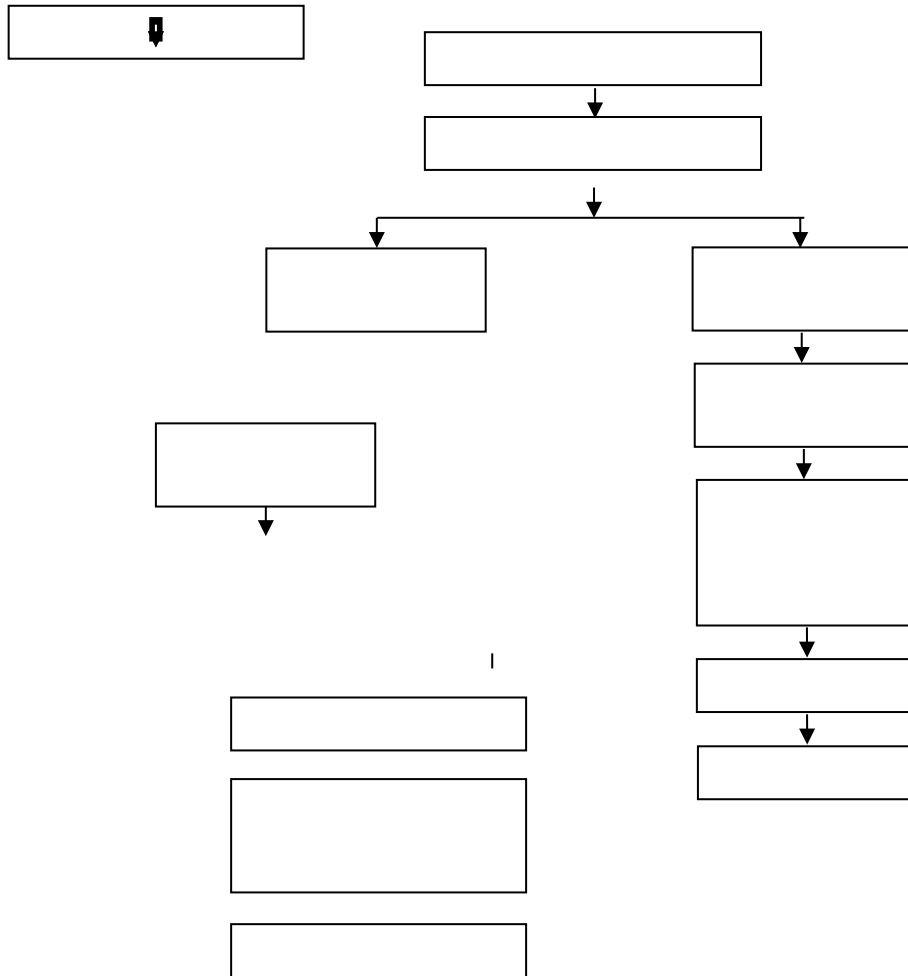
Test Report

No.:

Date:

ATTACHMENTS

Hexavalent Chromium (Cr(VI)) Testing Flow Chart

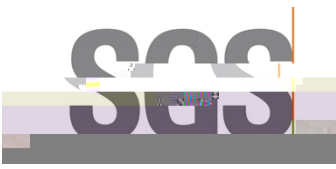




Test Report

No.:

Date:

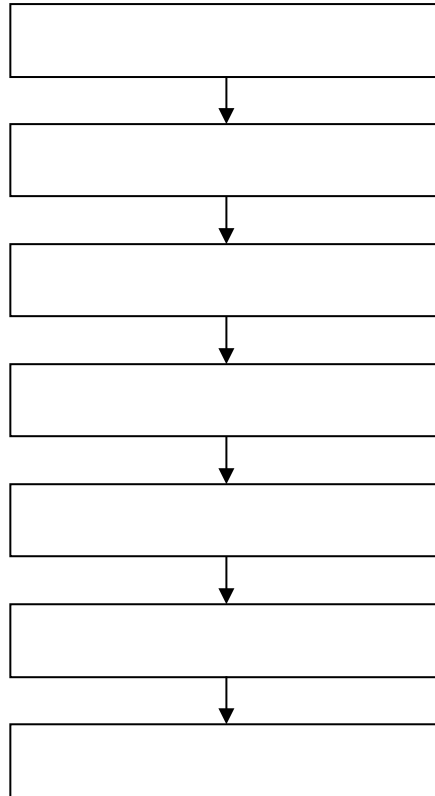


Test Report
ATTACHMENTS

No.:

Date:

Elements Testing Flow Chart



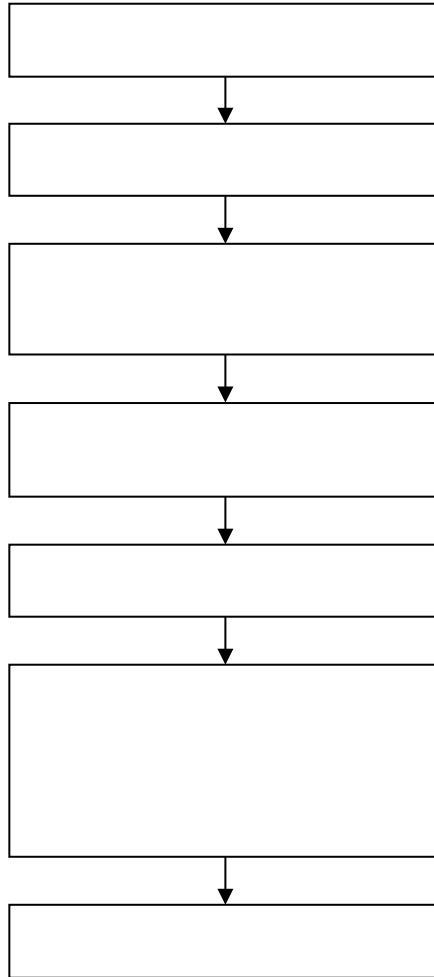


Test Report
ATTACHMENTS

No.:

Date:

Halogen Testing Flow Chart



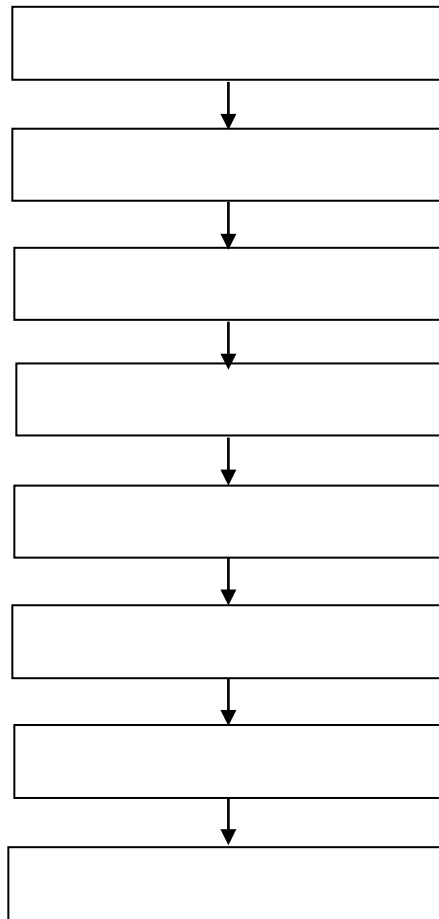


Test Report
ATTACHMENTS

No.:

Date:

Chlorinated Paraffin Testing Flow Chart





Test Report

No.:

Date:

ATTACHMENTS

TBBP-A Testing Flow Chart

Test Report

No.:



Test Report
ATTACHMENTS

No.:

Date:

PFASs/ PFOS/PFOA Testing Flow Chart

